

## CASE STUDY

Design Engineering And Development of Appliances

close monitoring  
Engineering  
Fitment of BOPs  
Drop Tests  
Communications &  
Interactive meetings  
Home Appliances  
Industrial Design  
Tool Designs  
Sheet Metal Dies  
**Die Molds**  
Prototypes  
Flow Analyses  
Mock-up  
Design Analyses  
Analyses  
Injection Molds  
Mold Flow

ART TO PART

**HONGYIJIG**  
Rapid Technologies Co Ltd



## ART TO PART



### Part Design

Industrial Product Design / Engineering considering manufacturing feasibility

### Prototyping

Functional Prototypes / SLA / SLA / Mock up / Painting / Printing / UV Textures / Laser Engraving / Carving

### Tool Design

Over an Interactive meeting or personal visits, Tool design refinements can be made considering the mold life, maintenance cost & ease of assembly and infrastructure available at client's workshop

### Tool Manufacturing

Lead Time

We ensure the T-1 lead time to be maintained as on agreement along with the inspection reports for critical dimensions

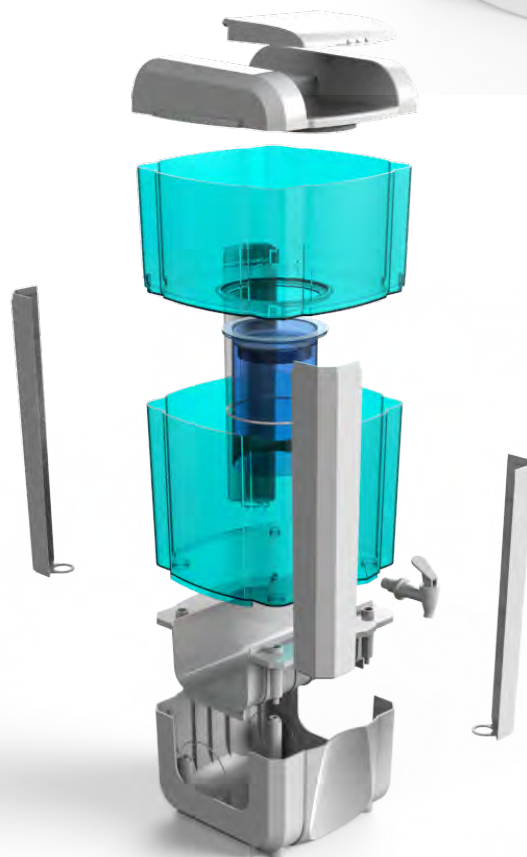
### Deliveries and Shipment

Can be made Ex Works . FOB . CIF . Or landed & taxes paid to your workshop

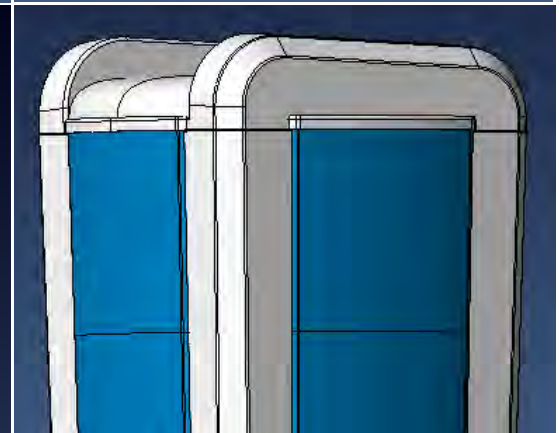
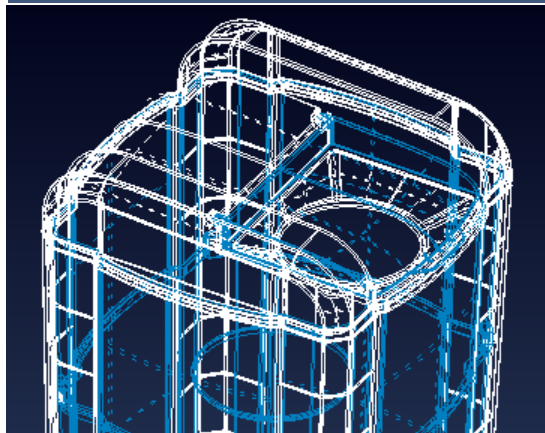
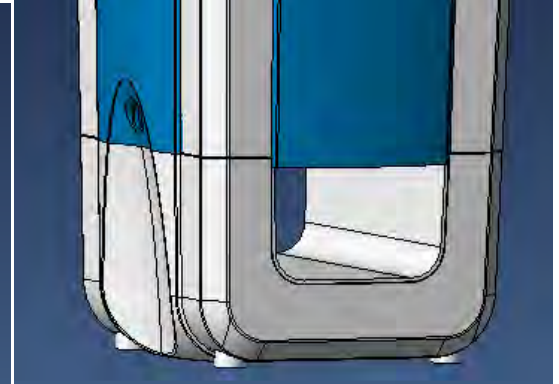
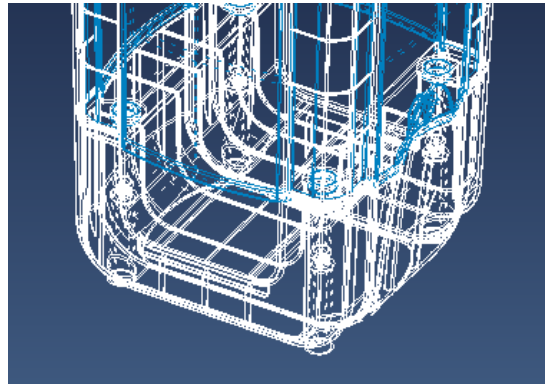
## Project Management

- Weekly updates for manufacturing progress
- Manufacturing pictures
- Trial Videos
- Trial inspection reports
- Molding parameter reports
- Molds Trial Support



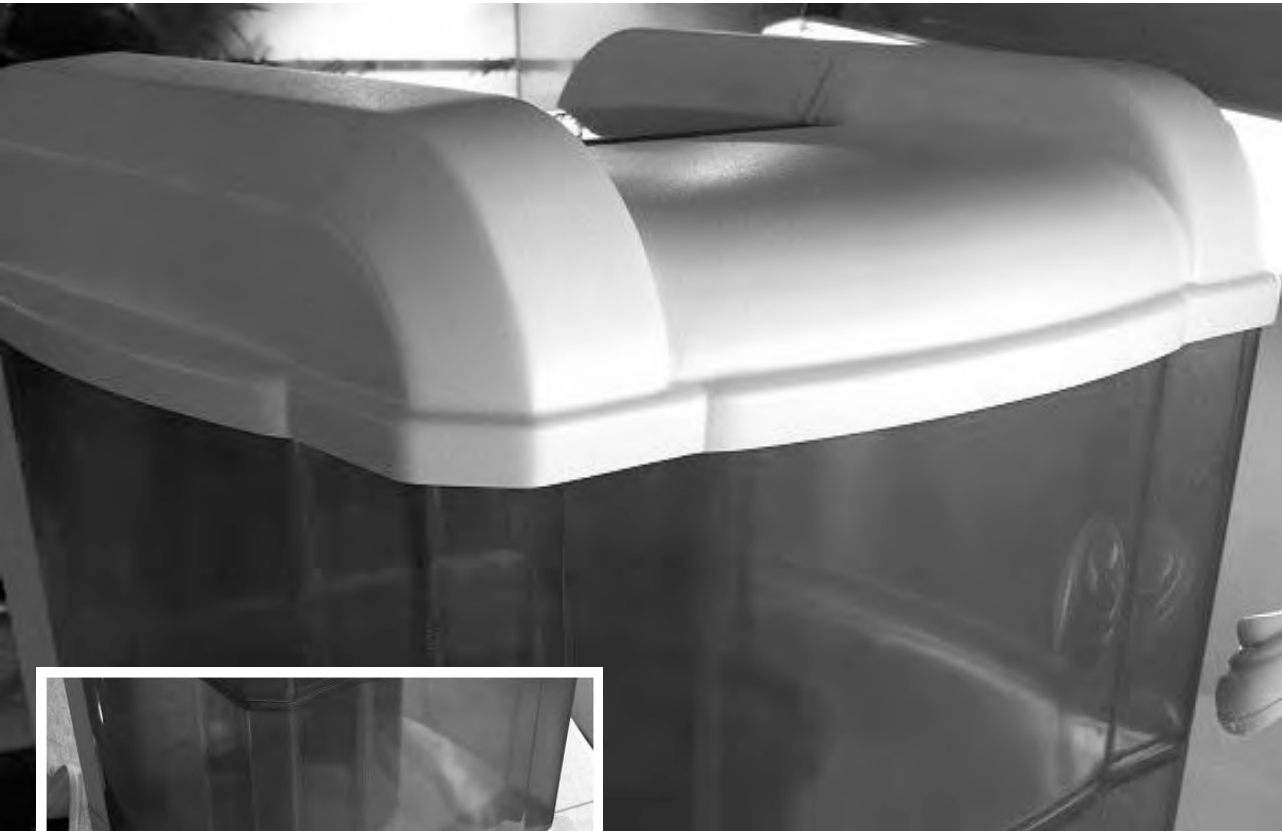


**ART TO PART**



**Engineering & Fitment**

ART TO PART

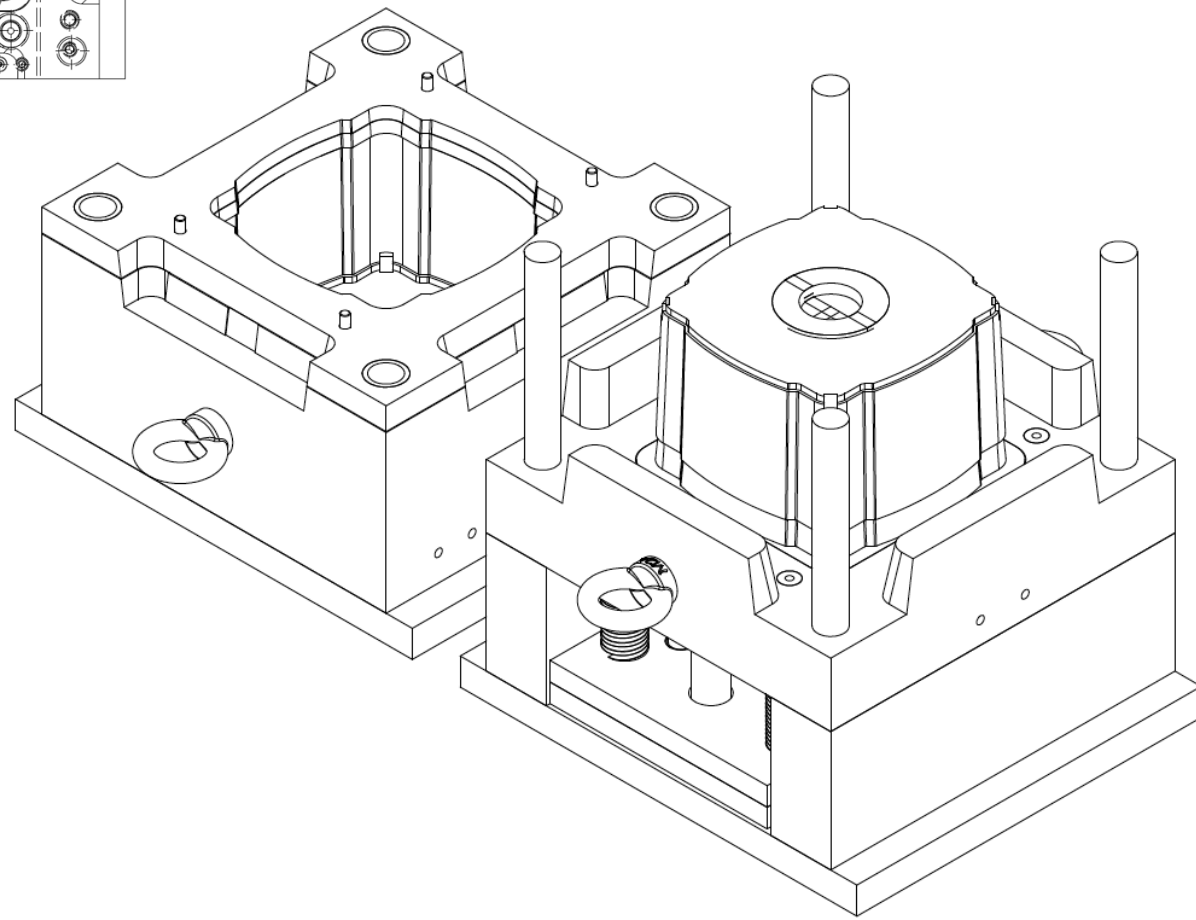
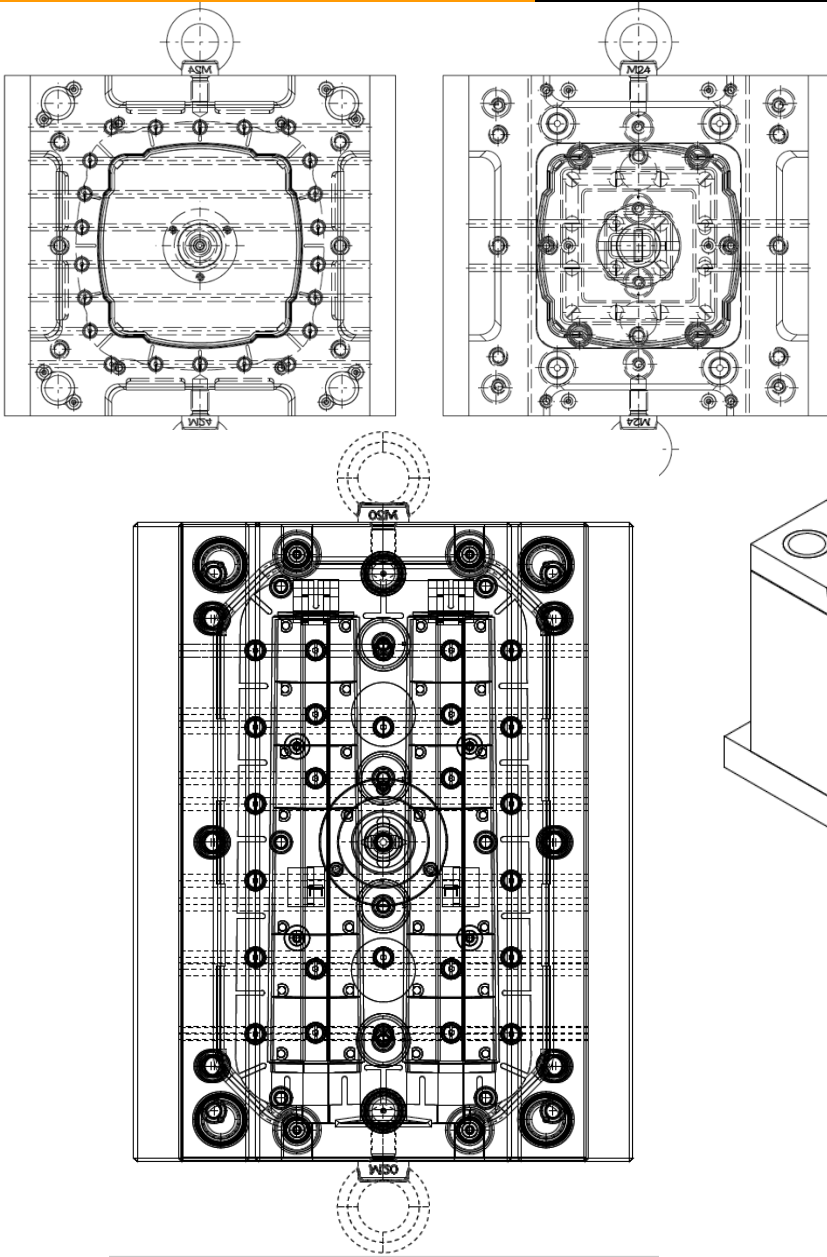


Functional **Prototypes**

# ART TO PART

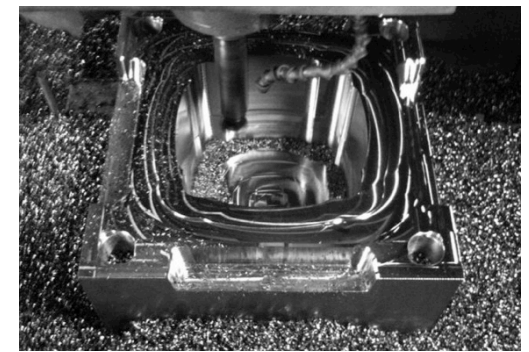
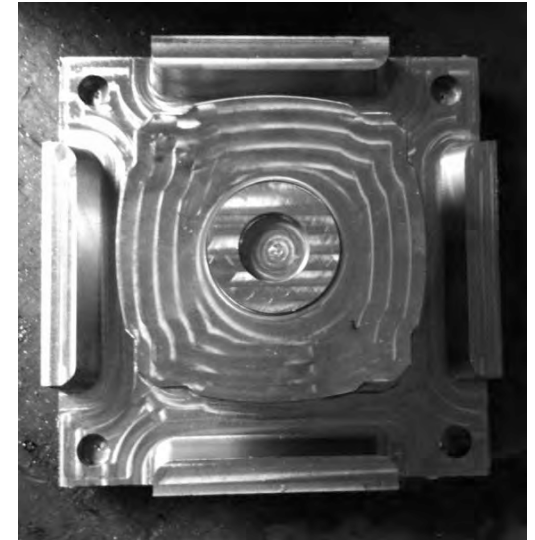


## ToolDesign





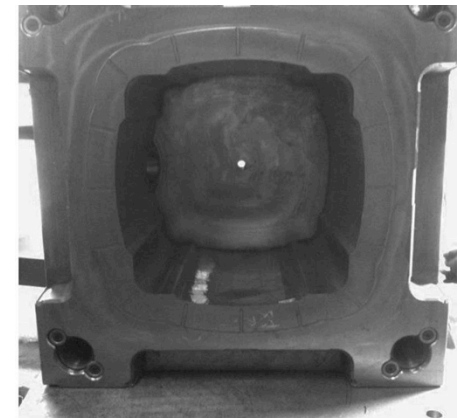
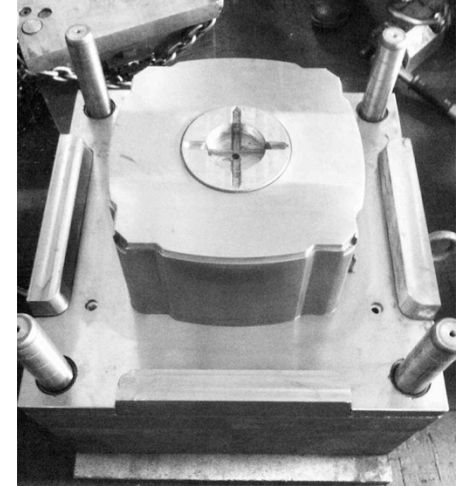
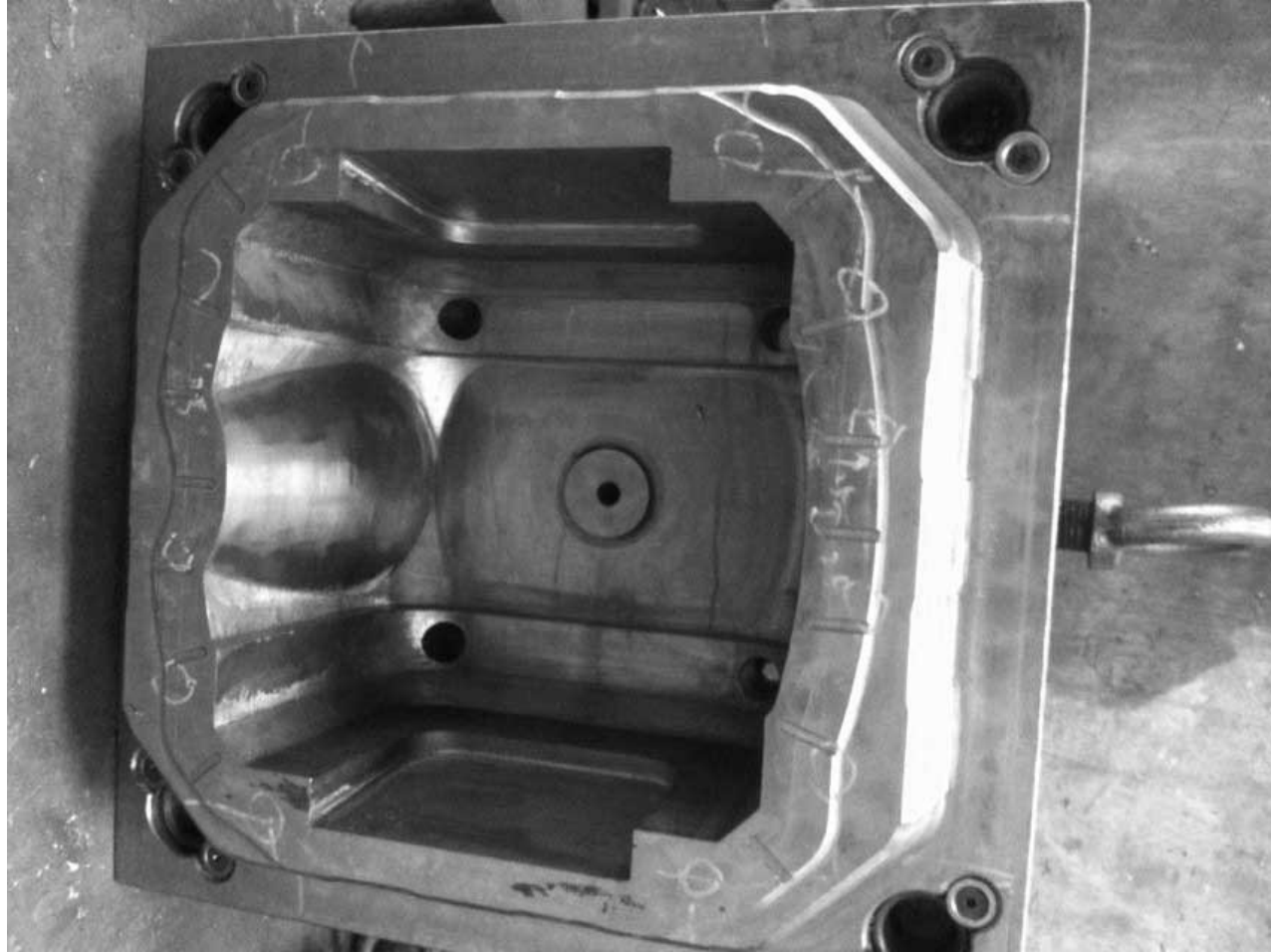
**ART TO PART**



**Tooling**



**ART TO PART**



**Tooling**

ART TO PART



TRIAL SAMPLES





## ART TO PART





**ART TO PART**

# THANK YOU

We continuously strive to bring the right curve on your face.

Thank you

**Hong Kong Office**  
Unit H1/F Mau Lam Commercial Building  
16-18 Mau Lam St Jordan KLN  
Hong Kong

**India Office**  
15/1 Second Floor, Rama Road  
Délhi 110015. INDIA  
Phone No. +91-8882912345

Email : [asia@hongyijig.com](mailto:asia@hongyijig.com)  
Visit Us : [www.hongyijig.com](http://www.hongyijig.com)  
Call : 8882912345