

## CASE STUDY

Design engineering and development of Home Automation Systems

close monitoring  
Engineering  
Fitment of BOPs  
Drop Tests  
Communications &  
Interactive  
Home Appliances  
Industrial Design  
Tool Designs  
Sheet Metal Dies  
**Die Molds**  
Prototypes  
Flow Analyses  
Mock-up  
Design Analyses  
Analyses  
Injection Molds  
Mold Flow

ART TO PART



## ART TO PART



### Part Design

Industrial Product Design / Engineering considering manufacturing feasibility

### Prototyping

Functional Prototypes / SLA / SLA / Mock up / Painting / Printing / UV Textures / Laser Engraving / Carving

### Tool Design

Over an Interactive meeting or personal visits, Tool design refinements can be made considering the mold life, maintenance cost & ease of assembly and infrastructure available at client's workshop

### Tool Manufacturing

Lead Time

We ensure the T-1 lead time to be maintained as on agreement along with the inspection reports for critical dimensions

### Deliveries and Shipment

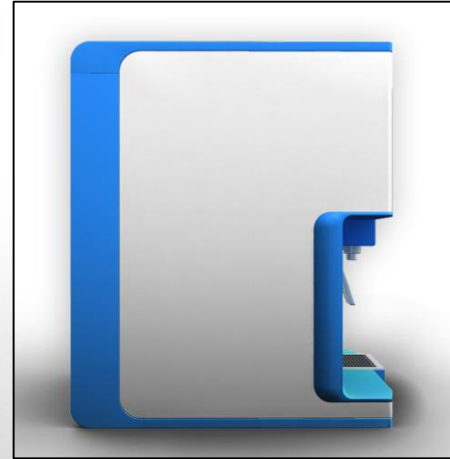
Can be made Ex Works . FOB . CIF . Or landed & taxes paid to your workshop

## Project Management

- Weekly updates for manufacturing progress
- Manufacturing pictures
- Trial Videos
- Trial inspection reports
- Molding parameter reports
- Molds Trial Support

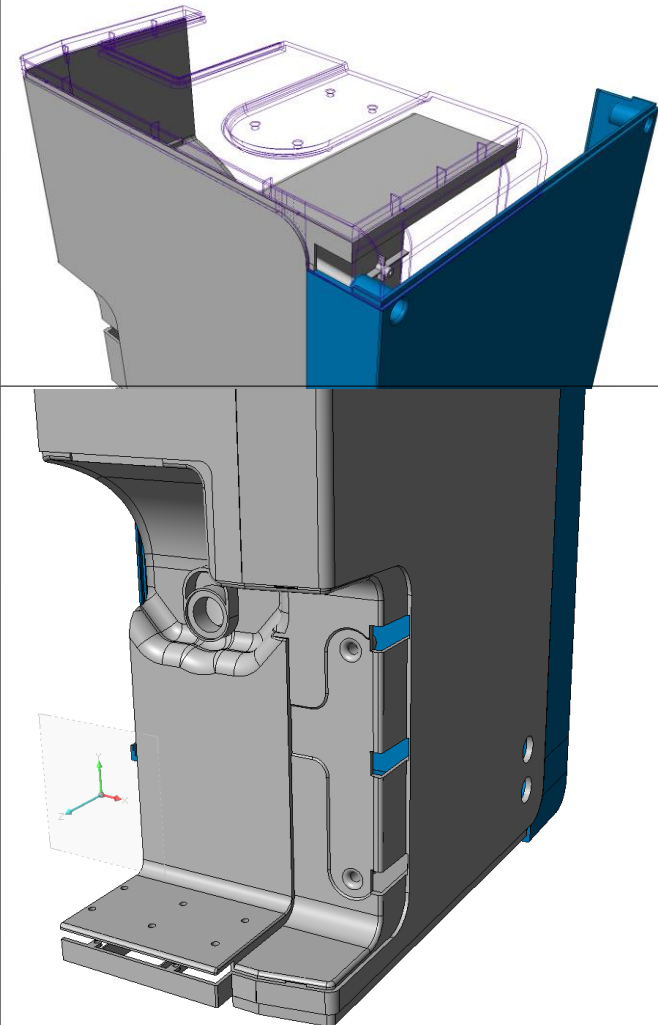
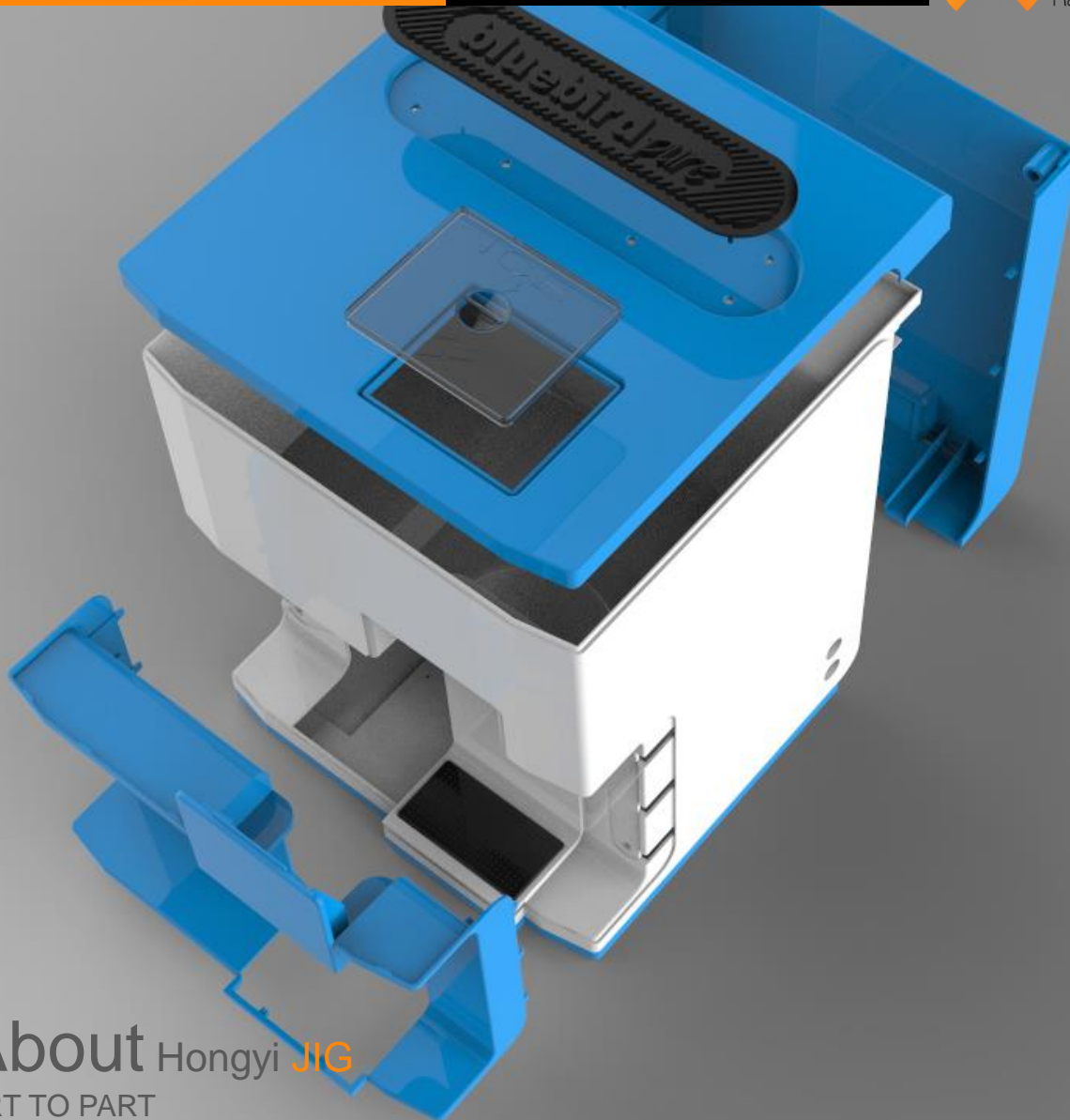


ART TO PART



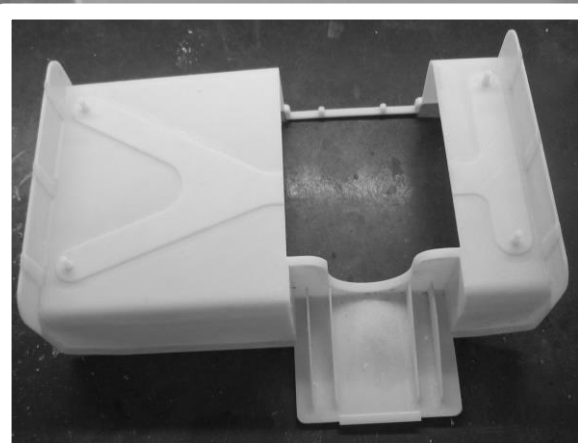
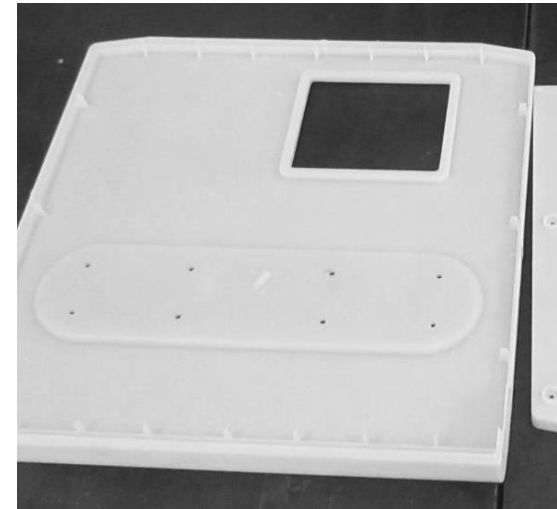
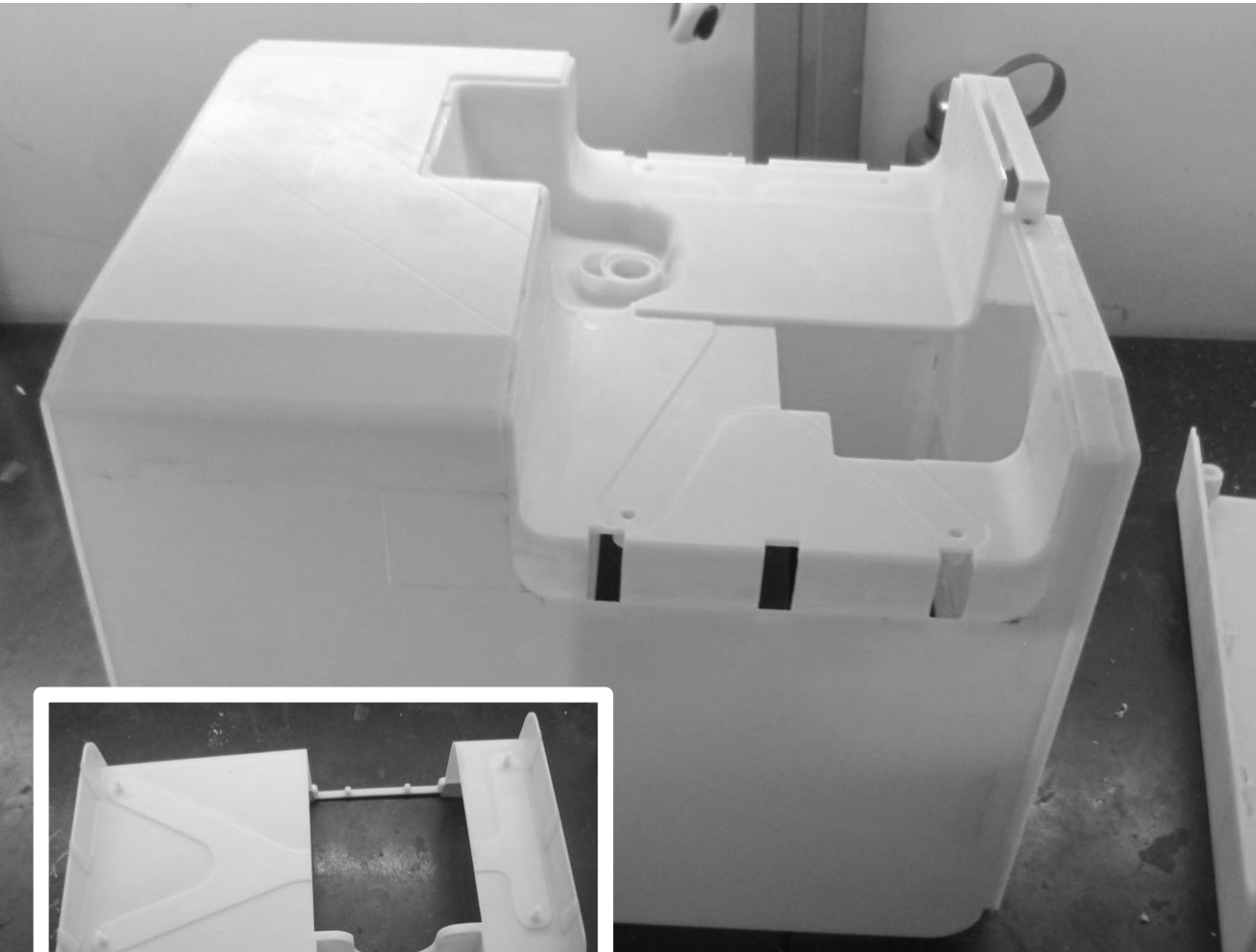
**Industrial Design**  
ART TO PART

# ART TO PART



About Hongyi JIG  
ART TO PART

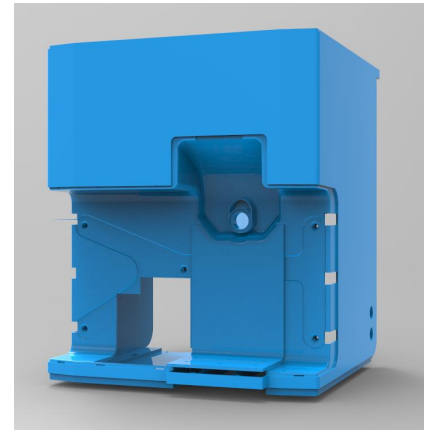
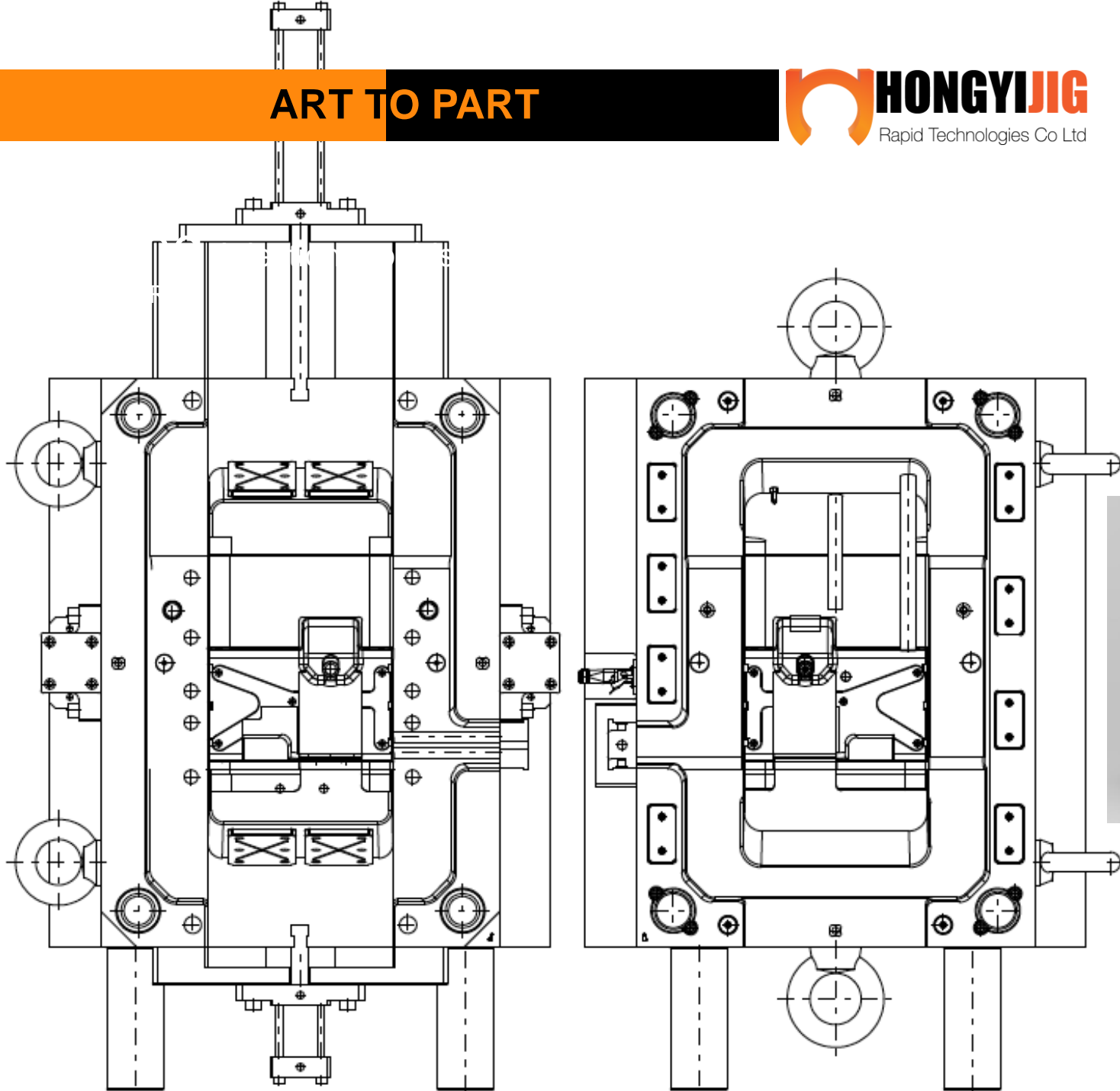
ART TO PART



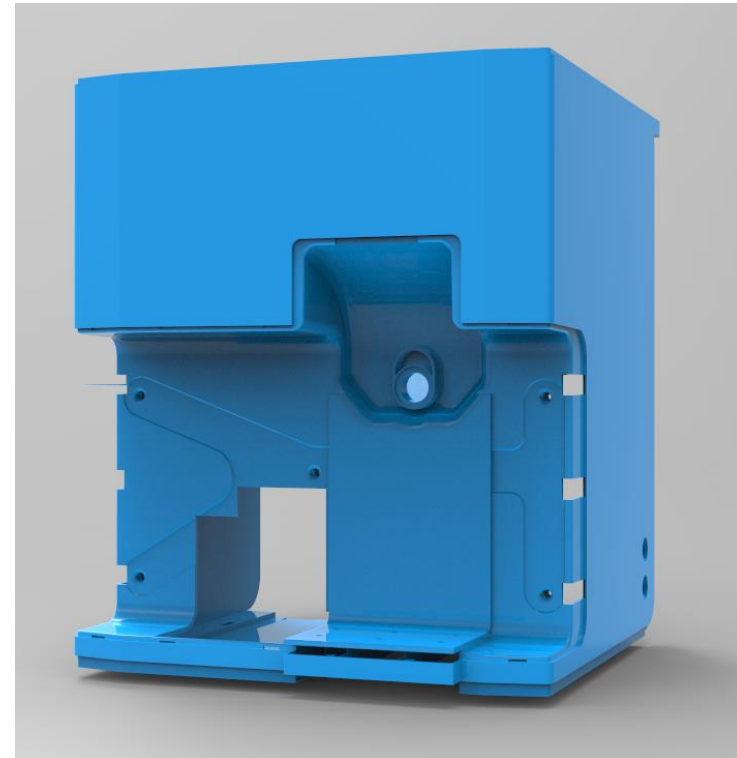
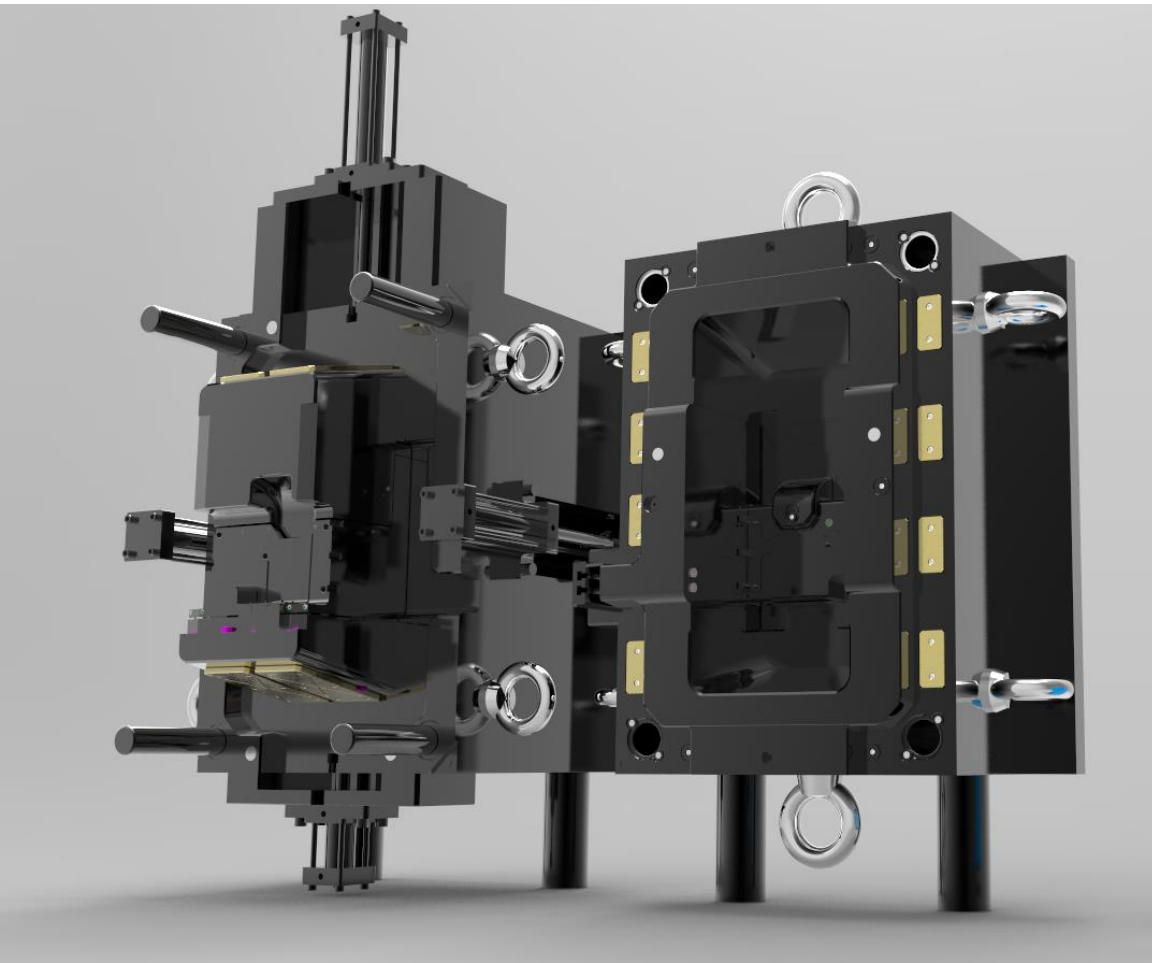
PrototypesFunction

al

# ART TO PART



ART TO PART



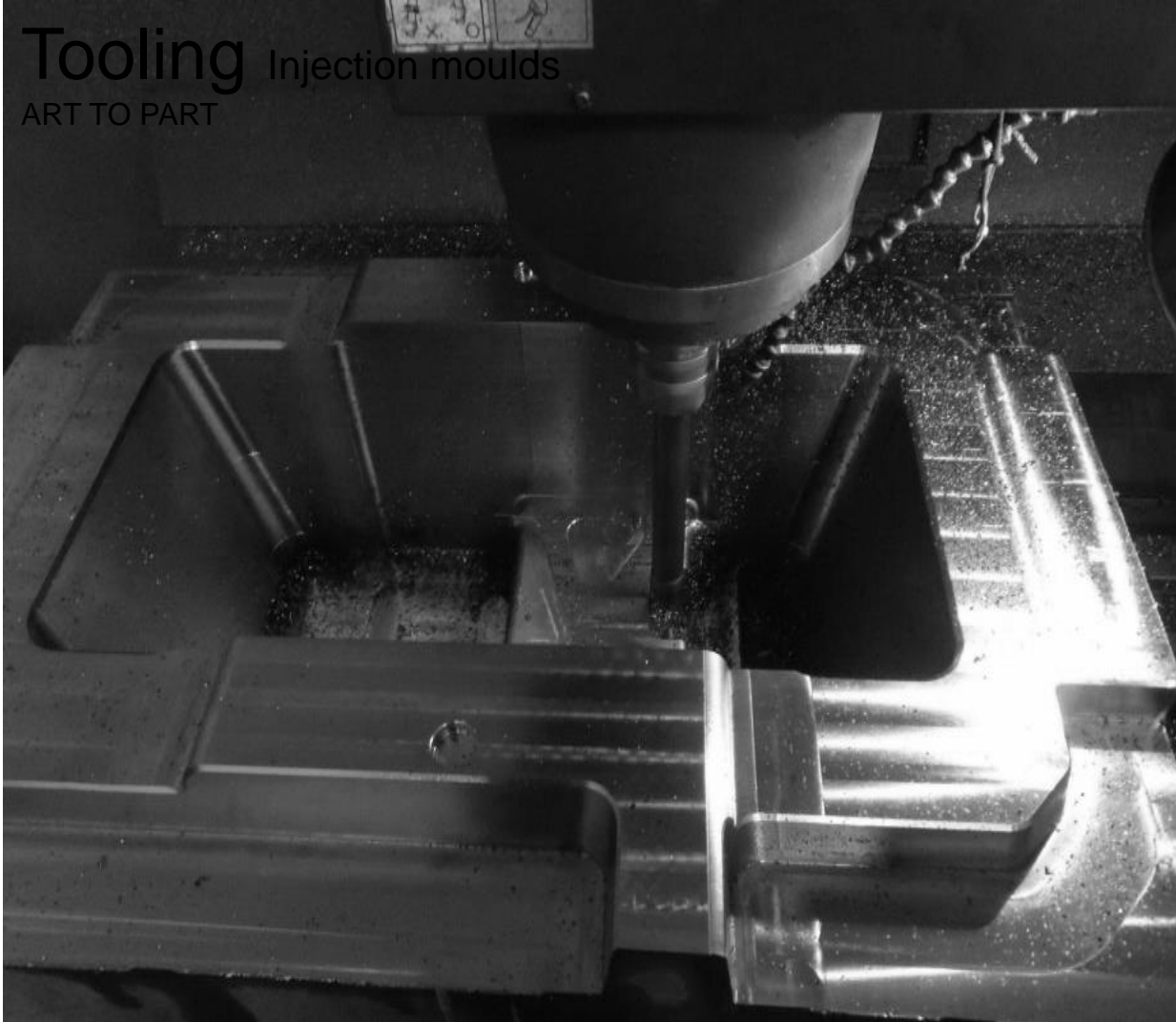
Tool Design Productivity  
ART TO PART



**ART TO PART**



**Tooling** Injection moulds  
ART TO PART



Visit us

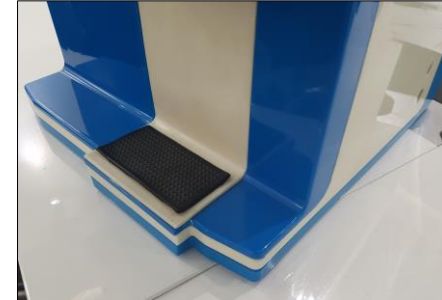
[www.hongyijig.com](http://www.hongyijig.com)

**ART TO PART**



**Tooling** Injection moulds  
ART TO PART

ART TO PART



**Tooling** Injection moulds  
ART TO PART

**ART TO PART**

# THANK YOU

We continuously strive to bring the right curve on your face.



## Thank you

Hong Kong Office  
01, 21/F, Prosper Commercial Building 9,  
Yin Chong Street, Kowloon, Hong Kong.  
Phone (China): +86-15824020602

India Office  
15/1 Second Floor, Rama Road  
Délhi 110015. INDIA  
Phone No. +91-8882912345

Email @ [asia@hongyijig.com](mailto:asia@hongyijig.com)  
Visit Us @ [www.hongyijig.com](http://www.hongyijig.com)  
Call @ 8882912345